



Evaporator LAK 300

The newly designed, versatile **Reinraumtechnik Lanz** LAK 300 is intended for various evaporation processes.

The LAK 300 is a small and handy system, especially designed for laboratory and R&D use.

Description

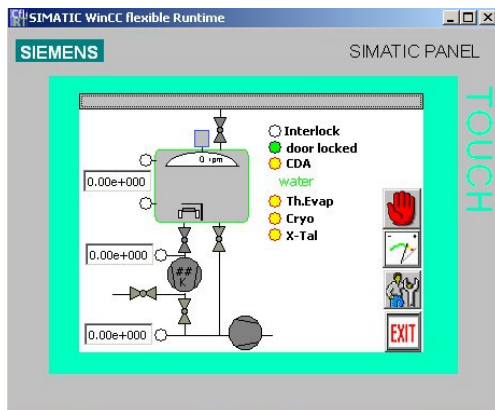
The system can be equipped with thermal evaporator, e-gun, glow discharge, substrate heaters, to name only a few possibilities.

Various deposition controllers are available for the system.

Standard configuration for this system is the APS 300 pump stand controller.



LAK 300



visualization screenshot

Features and Benefits

- 13 x Ø 34,5 mm feedthroughs in the chamber bottom
- 1 x Ø 34,5 mm feedthroughs in the chamber ceiling
- high-vac. pump connection, standard DN 100 for pump down, optional DN 200 for high-speed pump down
- 2 x KF 16 and 2 x KF 25 flange
- various high-vac. pumps available
- safety functions included (emergency stop, power for evaporation)
- automatic door lock and un-lock system
- different substrate holders available
- DN 100 window in door with exchangeable evaporation safety glass
- Water cooling system
- Manual / semi-automatic / automatic mode
- Auto-generation functions for cryo pumps
- CE marking
- 12 months warranty

Facility Requirements

Voltage/Power: 400 V / 50 Hz (32 A, dependent on configuration)

Dimensions

System's dimensions: w x d x h: 560 x 700 x 1900 mm
 Chamber inner dimensions: w x d x h: 300 x 325 x 380 mm